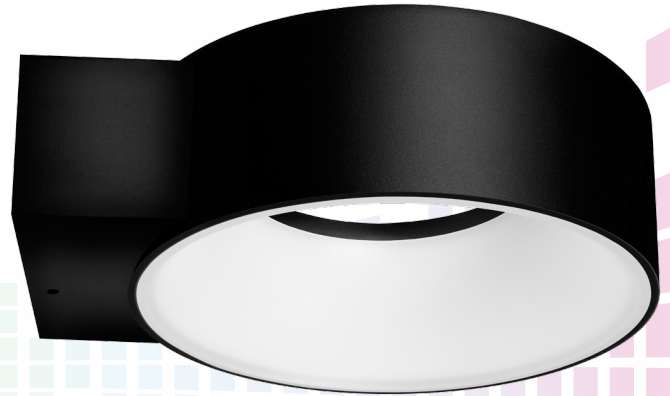


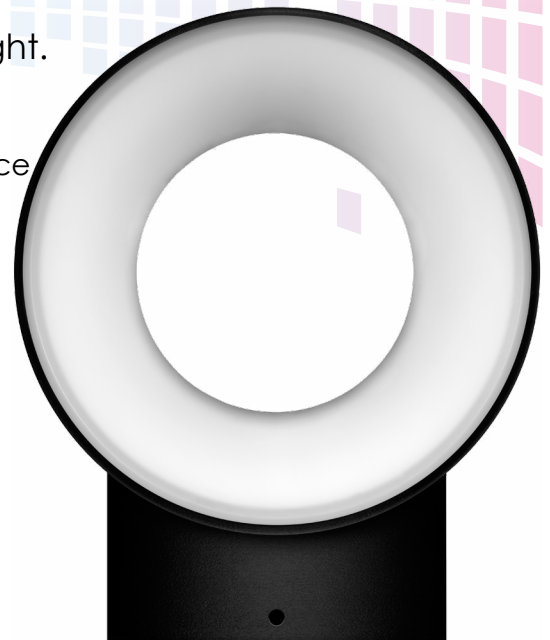


LED POLO WALL LIGHT



Energy efficient integrated LED wall mounted downlight.

- IP65 rating for outdoor use
- Hollow ring design with diffused light emitting from inner surface
- Constructed from aluminium with a polycarbonate cover
- 510 total lumens
- 120° beam angle
- 4000K cool white colour temperature
- 40,000 hours average rated life
- 100,000 switching cycles
- Not suitable for dimming
- Instant full light



| Code | Product Name | Watts | Colour | Total Lumens | Beam Angle | Height | Diameter | Price |
|------|---------------------|-------|------------------|--------------|------------|--------|----------|-------|
| 9608 | Polo Wall Downlight | 8W | 4000K Cool White | 510lm | 120° | 59mm | 140mm | |

Lighting brilliance since 1878

