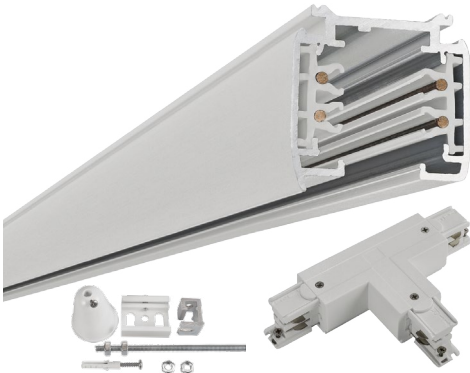


Phoebe LED 3-Circuit Track System



Universal mains voltage 3-circuit track system.

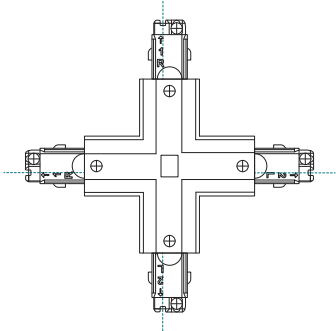
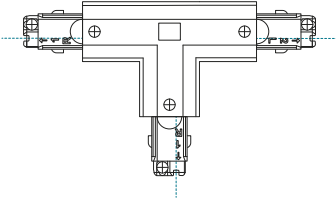
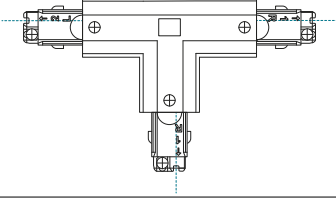
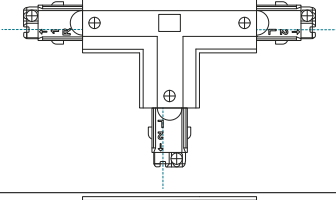
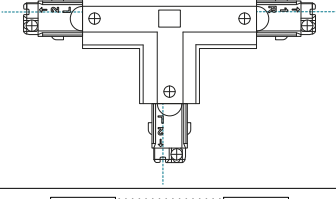

- Available in a multitude of lengths, corners and couplers to suit any installation.
- Features a ridge so that any fitted corner or coupler maintains the polarity and correct circuit selection of the track installation. The ridge can be used on the inside edge or the outside edge.
- Suitable for use with Phoebe LED Alecto Dimmable track light and Ares track light.

| Product Code | Finish | Description | Diagram | Dimensions (mm) | | | Order Qty |
|--------------|--------|---|---------|-----------------|------|------|-----------|
| | | | | L | H | W | |
| 10659 | White | 1m 3-Circuit Track (2 mounting points) | | 1000 | 35.5 | 35.2 | 1 |
| 10826 | Black | | | | | | |
| 10666 | White | 2m 3-Circuit Track (3 mounting points) | | 2000 | 35.5 | 35.2 | 1 |
| 10833 | Black | | | | | | |
| 10673 | White | 3m 3-Circuit Track (4 mounting points) | | 3000 | 35.5 | 35.2 | 1 |
| 10840 | Black | | | | | | |
| 10680 | White | Left Live End Feed | | 98 | 35.5 | 35.2 | 1 |
| 10857 | Black | | | | | | |
| 10697 | White | Right Live End Feed | | 98 | 35.5 | 35.2 | 1 |
| 10864 | Black | | | | | | |
| 10703 | White | End Cap | | 31 | 35.5 | 35.2 | 1 |
| 10871 | Black | | | | | | |
| 10710 | White | Coupler | | 165 | 35.5 | 35.2 | 1 |
| 10888 | Black | | | | | | |
| 10727 | White | Left Coupler | | 101 | 35.5 | 101 | 1 |
| 10895 | Black | | | | | | |
| 10734 | White | Right Coupler | | 101 | 35.5 | 101 | 1 |
| 10901 | Black | | | | | | |

Lighting brilliance since 1878

Phoebe LED™ is a trading name of Crompton Lamps Limited
 Crompton Lamps Limited registered in England and Wales No. 05590551
 Registered office and correspondence address: Unit 2, Marrtree Business Park, Bowling Back Lane, Bradford BD4 8QE
Tel: +44 (0)1274 657 088 **Fax:** +44 (0)1274 657 087 **Email:** sales@cromptonlamps.com **Web:** www.cromptonlamps.com

All images and specifications are for illustration purposes only and are subject to change without notice.
 E. & O. E. © Crompton Lamps Limited 2019

| Product Code | Finish | Description | Diagram | Dimensions (mm) | | | Order Qty |
|--------------|--------|--|---|-----------------|------|------|-----------|
| | | | | L | H | W | |
| 10741 | White | X-Coupler |  | 166 | 35.5 | 166 | 1 |
| 10918 | Black | | | | | | |
| 10758 | White | T-Coupler Left Inside |  | 101 | 35.5 | 166 | 1 |
| 10925 | Black | | | | | | |
| 10765 | White | T-Coupler Left Outside |  | 101 | 35.5 | 166 | 1 |
| 10932 | Black | | | | | | |
| 10772 | White | T-Coupler Right Inside |  | 101 | 35.5 | 166 | 1 |
| 10949 | Black | | | | | | |
| 10789 | White | T-Coupler Right Outside |  | 101 | 35.5 | 166 | 1 |
| 10956 | Black | | | | | | |
| 10796 | White | Flexible Coupler |  | 248 | 35.5 | 35.2 | 1 |
| 10963 | Black | | | | | | |
| 10802 | White | Rigid Suspension Kit (1 per mounting point) | | - | - | - | 1 |
| 10970 | Black | | | | | | |
| 10819 | White | Wire Suspension Kit (1 per mounting point) | | - | - | - | 1 |
| 10987 | Black | | | | | | |

Note: Check the ridge/groove position on the diagram to ensure correct polarity and circuit selection is maintained.

Lighting brilliance since 1878

Phoebe LED™ is a trading name of Crompton Lamps Limited
 Crompton Lamps Limited registered in England and Wales No. 05590551
 Registered office and correspondence address: Unit 2, Marrtree Business Park, Bowling Back Lane, Bradford BD4 8QE
Tel: +44 (0)1274 657 088 **Fax:** +44 (0)1274 657 087 **Email:** sales@cromptonlamps.com **Web:** www.cromptonlamps.com

All images and specifications are for illustration purposes only and are subject to change without notice.
 E. & O. E. © Crompton Lamps Limited 2019