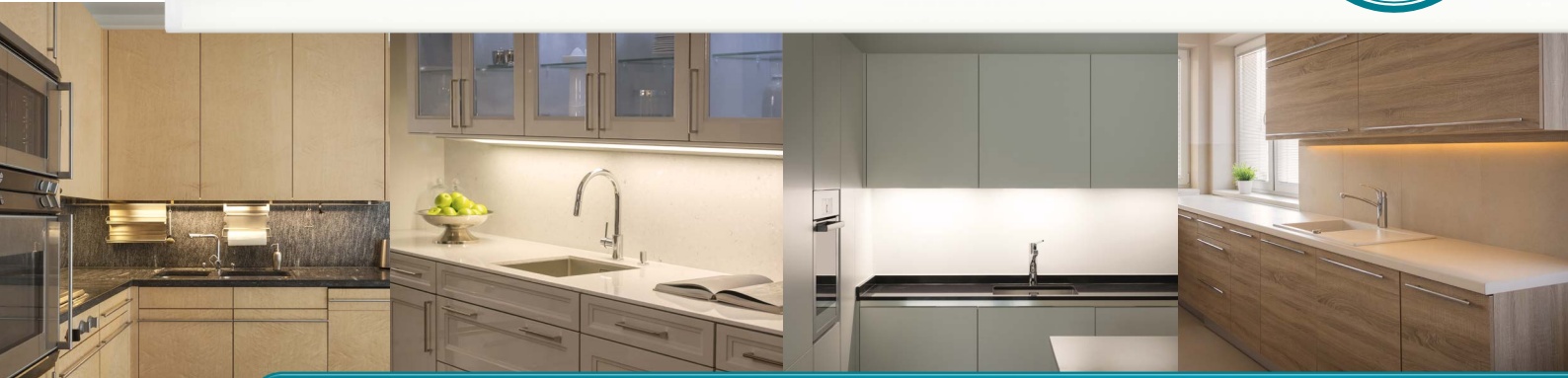
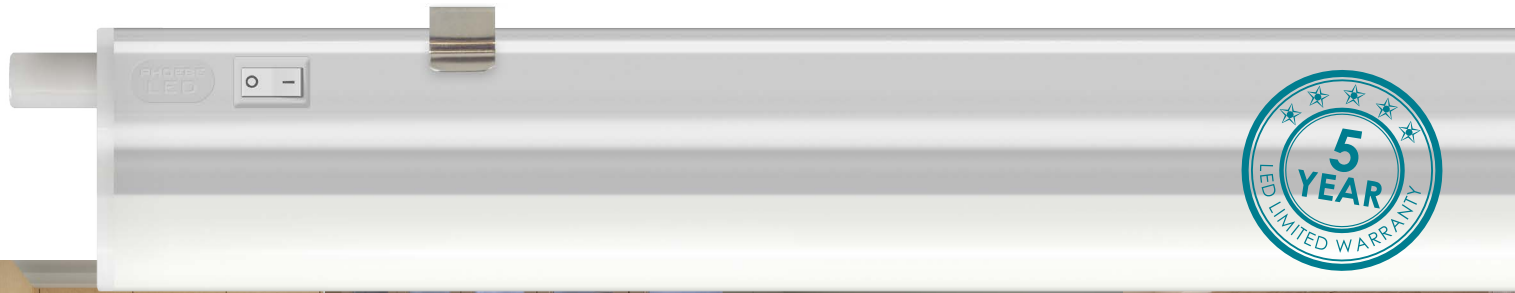




LED Link-Lights



LED Link-Light

Available in 300mm, 600mm, 900mm & 1200mm lengths

- Lightweight LED Link-light with integrated, maintenance free SMD LED technology
- Ideal for under-cabinet kitchen lighting or other concealed lighting
- Connect up to 9 metres of LED Link-lights for continuous seamless lighting from the same power source
- Choose from 3000K warm white or 4000K cool white

LED Link-Lights

Code	Length	Wattage	Voltage	Colour Temp	Lumen	Life	CRI	Energy Rating	MOQ
4320	300mm	5W	240V	3000K Warm White	340lm	25,000 hrs	≥80	A+	1
4337	600mm	8W	240V	3000K Warm White	650lm	25,000 hrs	≥80	A+	1
4344	900mm	11W	240V	3000K Warm White	950lm	25,000 hrs	≥80	A+	1
4351	1200mm	15W	240V	3000K Warm White	1350lm	25,000 hrs	≥80	A+	1
4368	300mm	5W	240V	4000K Cool White	380lm	25,000 hrs	≥80	A+	1
4375	600mm	8W	240V	4000K Cool White	700lm	25,000 hrs	≥80	A+	1
4382	900mm	11W	240V	4000K Cool White	1000lm	25,000 hrs	≥80	A+	1
4399	1200mm	15W	240V	4000K Cool White	1400lm	25,000 hrs	≥80	A+	1
4542	50cm Link-Lead								1
4559	1m Link-Lead								1

Lighting brilliance since 1878

Phoebe LED™ is a trading name of Crompton Lamps Limited registered in England and Wales No. 05590551
 Registered office and correspondence address: Unit 2, Martree Business Park, Bowling Back Lane, Bradford BD4 8QE

Tel: +44 (0)1274 657 088 **Fax:** +44 (0)1274 657 087 **Email:** sales@phoebeled.com **Web:** www.phoebeled.com

All images and specifications are for illustration purposes only and are subject to change without notice. E. & O. E. © Crompton Lamps Limited 2017.