



MELANA

LED SLIM



This instruction sheet is relevant to Phoebe LED Melana Slim Bulkhead part codes: 8892

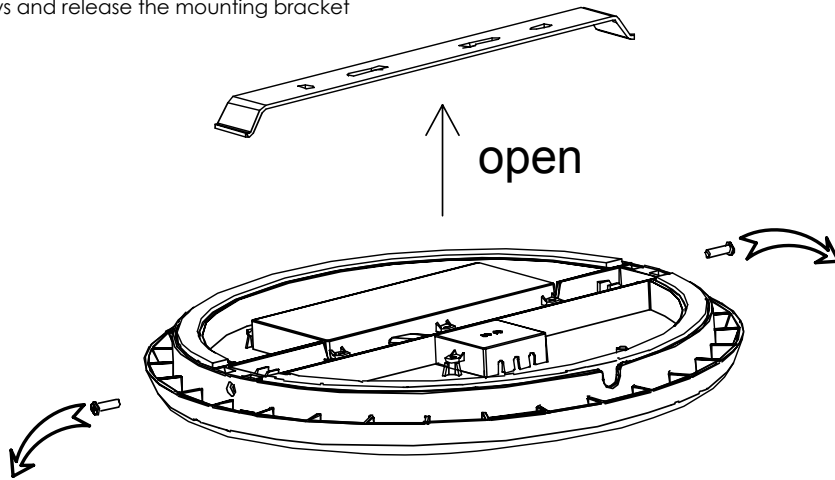
THANK YOU for buying this PHOEBE LED product. To help ensure this luminaire gives complete satisfaction please only use it according to the following instructions, and then pass the instructions to the appropriate person for retention and future reference.

Warning

1. Installation only to be carried out by a qualified electrician
2. Please ensure surface is suitable and capable of holding the lamp weight
3. Do not operate if product is damaged
4. Suitable for use in humid conditions and bathrooms Zones 1-2 IP54 rating (IP20 Rear)
5. This product is not suitable for fire rated installations

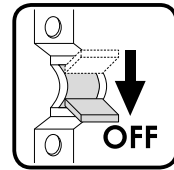
1. Prepare the Melana Slim Bulkhead

- a. Remove the screws and release the mounting bracket



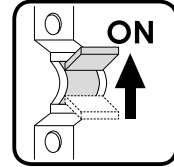
BEFORE YOU START
PLEASE READ ALL THE
INSTRUCTIONS CAREFULLY

PRIOR TO INSTALLATION



Turn power
off at the
mains

ONLY ONCE INSTALLATION IS COMPLETE



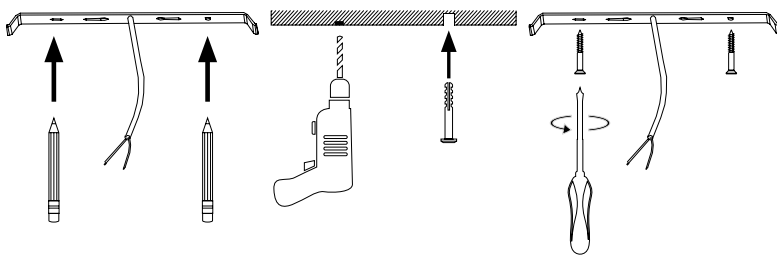
Turn power
back on at
the mains

CIRCUIT TESTING

For high voltage circuit insulation
testing disconnect mains input
supply first
(Do not circuit test using a Megger)

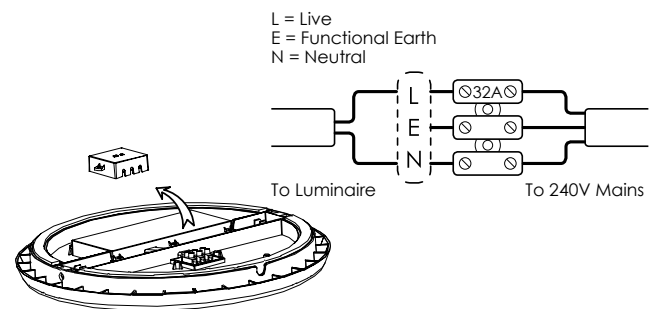
2. Prepare Mounting Surface

- a. Place the mounting bracket in position and mark fixing hole positions
- b. Drill fixing holes and insert supplied raw plugs
- c. Screw bracket firmly into position



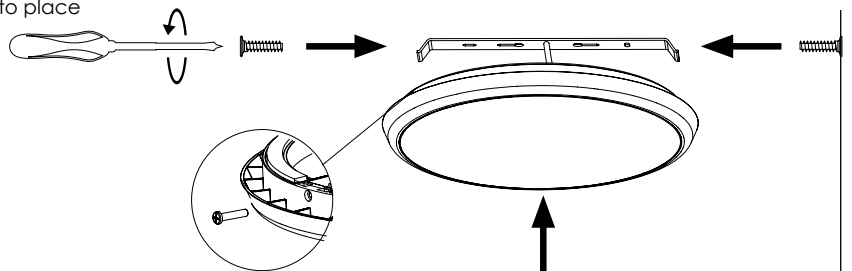
3. Wire to Mains

- a. Remove terminal block cover
- b. Luminaire contains a 32Amp rated terminal block
- c. Terminate cables in accordance with current wiring regulations
- d. Replace terminal block cover



4. Attach Melana Select Bulkhead

- a. Position luminaire over mounted bracket and push into place, ensuring bracket fixing holes are in the correct position
- b. Position screws into bracket fixing holes and tighten to fix into place



Environmental Protection
Waste electrical products should not be disposed of with household waste. Please recycle where facilities exist. Check with your Local Authority or retailer for recycling advice.

Images are for information only. Phoebe LED shall not be held liable for improper operation of the luminaire in circumstances where procedures and specifications have not been followed correctly. Crompton Lamps Limited 2018

Tel: +44 (0) 1274 657 088 **Fax:** +44 (0) 1274 657 087 **Web:** www.phoebeled.com