



# PHOEBE LED FIRESAFE DOWNLIGHT

## All-In-One Dimmable Downlight

Designed with easy installation in mind, it features a constant current driver with fitting-to-fitting loop-in/loop-out tool-less wiring connector.

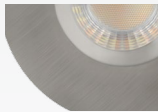
- 30, 60 and 90 minute fire-rated
- Available in 3000K or 4000K colour options
- Suitable for dimming
- IP65 rated
- 30,000 hour life
- 60° beam angle
- Colour rendering index  $\geq 80$
- Instant full light
- 3 year warranty



Each Firesafe Eco is supplied with twist-on interchangeable stylish bezels to complement various decor styles.



White



Brushed Nickel



Optional Chrome Bezel



Dimmable



Suitable for Bathroom use Zones 1-2



60° Beam Angle



30,000 Hours Average Rated Life



IP65 Ingress Protection



Fire Rated 30, 60, 90 mins

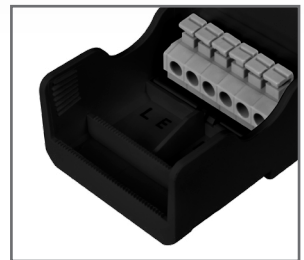


3000K WARM WHITE

4000K COOL WHITE

3000K or 4000K Colour Options

### loop-in/loop-out



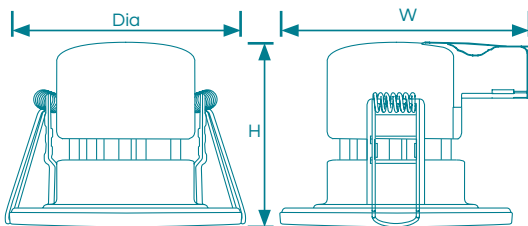
Features tool-less loop-in/loop-out quick-connector for fast and easy installation.

# Technical Information

## 6.7W Fire-Rated Dimmable Downlight



- 30, 60 and 90 minute fire-rated
- Available in 3000K or 4000K colour options
- Suitable for dimming
- IP65 rated
- 30,000 hour life
- 60° beam angle
- Colour rendering index ≥80
- Instant full light
- 3 year warranty



Product Code	Watts (W)	Volts (V)	Colour Appearance	Colour Temp (K)	Useful Lumens (lm)	Total Lumens (lm)	Beam Angle	Dimensions (mm)				Order Qty
								Dia	H	W	Cutout ø	

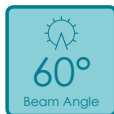
### Single Carton

12868	6.7	240	Warm white	3000K	470	540	60°	89	90	100	70-72	1
12875	6.7	240	Cool White	4000K	490	560	60°	89	90	100	70-72	1
12646-10	Optional Chrome Bezel - 10 Pack							89	5			1

Installation may require advice from a qualified person. Part L Compliant of UK Building Regulations, Part B Compliant BS476 Parts 21 and 22. Suitable for 30 minute 600mm/15mm single layer Standard Wallboard, 60 minute 600mm/12.5mm twin layer Fireboard and 90 minute 450mm/15mm twin layer Fireboard ceilings.

**Annual running cost = £2.46**

\*Figure is based on annual usage 7hrs/day @ £0.1437kWhr



Optional Chrome Bezel

Crompton Lamps Limited registered in England and Wales No: 05590551

Crompton Lamps Limited  
Unit 2  
Marrtree Business Park  
Bowling Back Lane  
Bradford  
BD4 8QE

Tel: 01274 657 088  
Fax: 01274 657 087  
Email: sales@cromptonlamps.com



www.cromptonlamps.com



Design and production by Marketing,  
Crompton Lamps Limited  
E. & O. E. © Crompton Lamps Limited 2019.  
All rights reserved.