



# MELANA LED SELECT



This instruction sheet is relevant to Phoebe LED Melana Select Bulkhead part codes: 6393, 6409 & 10468  
**THANK YOU for buying this PHOEBE LED product.** To help ensure this luminaire gives complete satisfaction please only use it according to the following instructions, and then pass the instructions to the appropriate person for retention and future reference.

**Environmental Protection**  
 Waste electrical products should not be disposed of with household waste. Please recycle where facilities exist.  
 Check with your Local Authority or retailer for recycling advice.

## Warning

1. Installation only to be carried out by a qualified electrician
2. Please ensure surface is suitable and capable of holding the lamp weight
3. Do not operate if product is damaged
4. Suitable for use in humid conditions and bathrooms Zone 1-2 IP54 rating (IP20 Rear)
5. This product is not suitable for fire rated installations

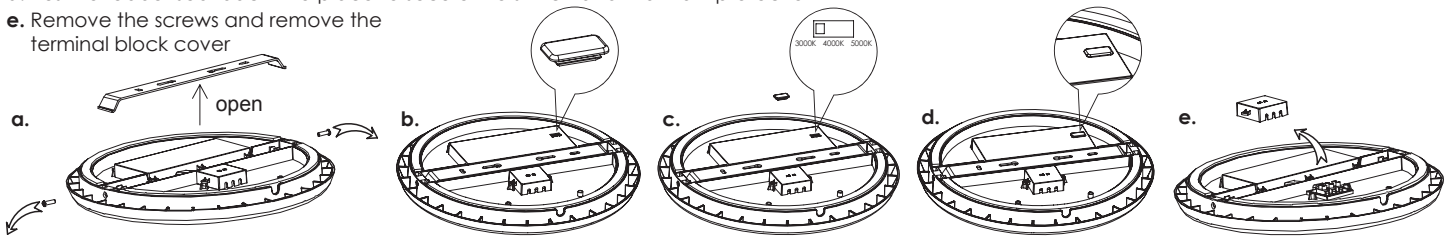
**BEFORE YOU START**  
**PLEASE READ ALL THE INSTRUCTIONS CAREFULLY**

<b>PRIOR TO INSTALLATION</b> Turn power off at the mains	<b>ONLY ONCE INSTALLATION IS COMPLETE</b> Turn power back on at the mains
---	--

**CIRCUIT TESTING**  
 For high voltage circuit insulation testing disconnect mains input supply first  
 (Do not circuit test using a Megger)

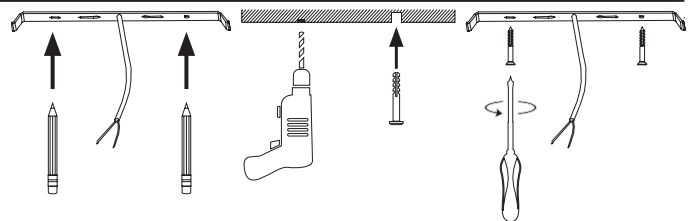
## 1. Prepare the Melana Select Bulkhead

- a. Remove the screws and release the mounting bracket
- b. Remove the rubber seal that protects the colour selection switch
- c. Select the required colour temperature (Left position = 3000K : Centre Position = 4000K : Right Position = 5000K)
- d. Push to rubber seal back into place to secure the switch and maintain protection
- e. Remove the screws and remove the terminal block cover



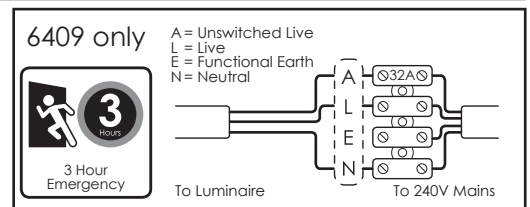
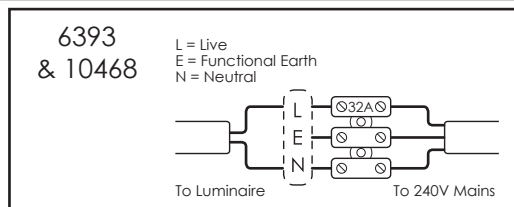
## 2. Prepare Mounting Surface

- a. Place the mounting bracket in position and mark fixing hole positions
- b. Drill fixing holes and insert supplied raw plugs
- c. Screw bracket firmly into position



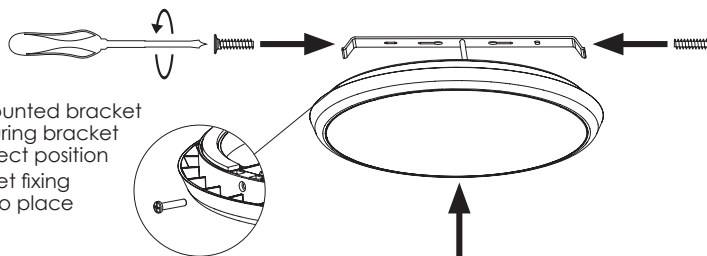
## 3. Wire to Mains

- a. Luminaire contains a 32Amp rated terminal block
- b. Terminate cables in accordance with current wiring regulations
- c. Refer to relevant diagram to right as guidance.
- b. Replace terminal block cover



## 4. Attach Melana Select Bulkhead

- a. Position luminaire over mounted bracket and push into place, ensuring bracket fixing holes are in the correct position
- b. Position screws into bracket fixing holes and tighten to fix into place



## 5a. 3 Hour Emergency Version (Part 6409 Only)

Integrated automatic emergency function illuminates to 20% light output when power supply is disrupted

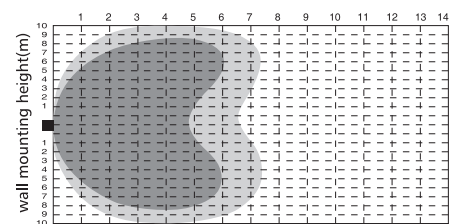
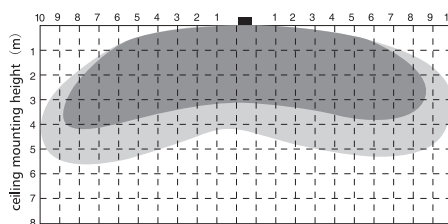
- Battery Duration: 3 hours
- Charge time: 24 hours



## 5b. Microwave Sensor Version (Part 6393 Only)

Detection area 140° angle and 5-7m distance

- In any given lighting condition the light will illuminate automatically when a presence is detected
- The light will then stay illuminated for hold time of 30 seconds then dim to 10% until another presence is detected



Images are for information only. Phoebe LED shall not be held liable for improper operation of the luminaire in circumstances where procedures and specifications have not been followed correctly. Crompton Lamps Limited 2018

**Tel: +44 (0) 1274 657 088 Fax: +44 (0) 1274 657 087 Web: www.phoebeled.com**