



PHOEBE LED FIRESAFE 2 DOWNLIGHT

2nd Generation All-In-One Dimmable Downlight



Features Tri-colour Selection and Interchangeable Bezels

- Tri-colour selection
- Fully dimmable
- 30, 60 and 90 minute fire-rated
- Interchangeable bezels



10W All-In-One Fire-Rated Dimmable Downlight

The 2nd generation all-in-one Firesafe 2 LED Downlight is fully dimmable and IP65 rated. It features an easy access front facing tri-colour selection switch (behind the front bezel) with a colour choice of 3000K, 4000K and 6000K.

It is provided with 3x stylish magnetic interchangeable bezels including white, chrome and brushed aluminium effects.

Designed with easy installation in mind, it features a constant current driver with fitting-to-fitting loop-in/loop-out tool-less wiring connector.

- 50,000 hour life
- 100,000 switching cycles
- 30, 60 and 90 minute fire-rated
- 40° beam angle
- 3000K, 4000K, 6000K tri-colour select
- Colour rendering index ≥ 80
- Suitable for dimming
- IP65 rated
- Instant full light
- 5 year warranty

Style, Safety and Versatility

Developed and designed to combine style, safety and versatility providing the perfect solution for both commercial and domestic applications.



Crompton Lamps Limited
Unit 2
Marrtree Business Park
Bowling Back Lane
Bradford
BD4 8QE

Tel: 01274 657 088
Fax: 01274 657 087

Email: sales@cromptonlamps.com
www.cromptonlamps.com

Trade Descriptions: All descriptions represent only particulars of the goods to which they apply and do not form part of any contract. Due to policy of continuous development and improvement, Crompton Lamps Limited reserves the right to change the specification and performance data of the products listed without prior notice or public announcement.

Fully Fire-Rated

The Firesafe 2 has been rigorously fire tested to provide fire safety that you can trust, offering piece of mind and making it ideal for use both commercially and domestically.



30 Minute Ceiling

600mm joist centres
Single layer 12.5mm plasterboard



60 Minute Ceiling

600mm joist centres
Double layer 15.0mm plasterboard



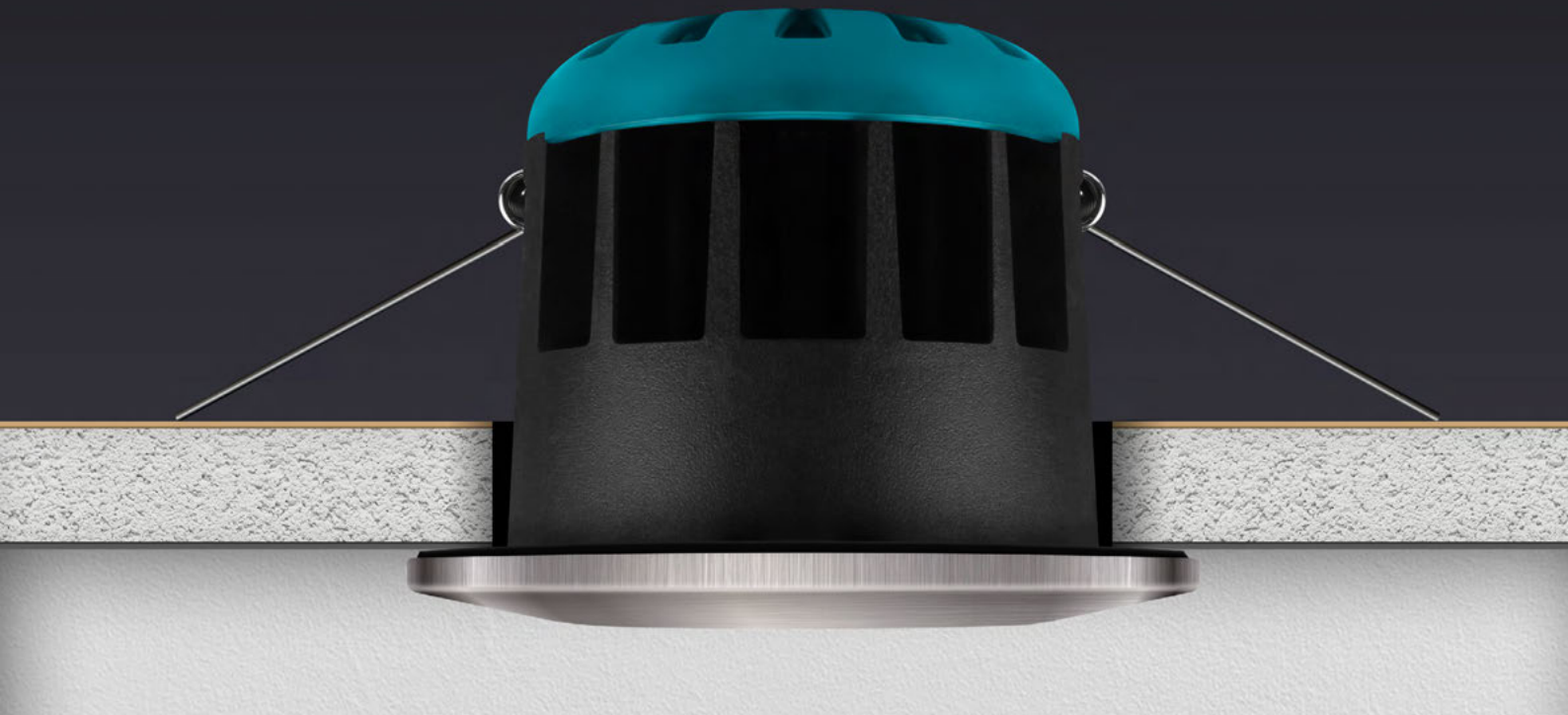
90 Minute Ceiling

450mm joist centres
Double layer 15.0mm plasterboard



Features Compact Design

The Firesafe 2 features a sleek compact design with a total height of just 61mm and a diameter of 82mm.



Crompton Lamps Limited
Unit 2
Marrtree Business Park
Bowling Back Lane
Bradford
BD4 8QE

Tel: 01274 657 088
Fax: 01274 657 087

Email: sales@cromptonlamps.com
www.cromptonlamps.com

Trade Descriptions: All descriptions represent only particulars of the goods to which they apply and do not form part of any contract. Due to policy of continuous development and improvement, Crompton Lamps Limited reserves the right to change the specification and performance data of the products listed without prior notice or public announcement.



Tri-colour Selection

3000K
WARM WHITE

4000K
COOL WHITE

6000K
DAYLIGHT



Easy Access Switch

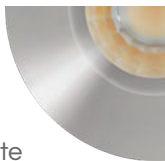
Changing the colour temperature is quick and simple thanks to the easy access switch located behind the magnetic bezels.

Interchangeable Bezels

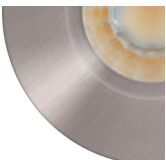
Each Firesafe 2 is supplied with three magnetic interchangeable stylish bezels to complement various decor styles.



White



Chrome



Brushed Aluminium



Crompton Lamps Limited
Unit 2
Marrtree Business Park
Bowling Back Lane
Bradford
BD4 8QE

Tel: 01274 657 088
Fax: 01274 657 087

Email: sales@cromptonlamps.com
www.cromptonlamps.com

Trade Descriptions: All descriptions represent only particulars of the goods to which they apply and do not form part of any contract. Due to policy of continuous development and improvement, Crompton Lamps Limited reserves the right to change the specification and performance data of the products listed without prior notice or public announcement.

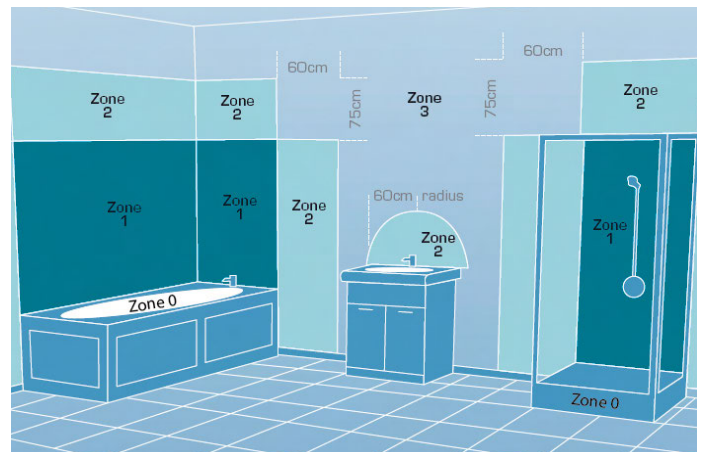
Fully IP65 Rated



One of the many key features of the Firesafe 2 is its IP65 rating. This rating ensures the Firesafe 2 can be utilised in a variety of wet conditions.

Benefits of an IP65 Rating

- Suitable for bathroom zones 1 & 2
- Suitable for wet weather outdoor use
- Complete protection against contact dust



Excellent Cost Savings

At just 10W with a 50,000 hour life and 100,000 switching cycles the Firesafe 2 will save you money.

Annual running cost
£3.67

Based on annual usage 7hrs/day @ £0.1437kWhr

Crompton Lamps Limited
Unit 2
Marrtree Business Park
Bowling Back Lane
Bradford
BD4 8QE

Tel: 01274 657 088
Fax: 01274 657 087

Email: sales@cromptonlamps.com
www.cromptonlamps.com

Trade Descriptions: All descriptions represent only particulars of the goods to which they apply and do not form part of any contract. Due to policy of continuous development and improvement, Crompton Lamps Limited reserves the right to change the specification and performance data of the products listed without prior notice or public announcement.

Dimmable

Features smooth dimmable operation with DuoDim Technology ensuring compatibility with trailing and leading edge dimmers.



For a full list of compatible dimmers please visit www.cromptonlamps.com

Quick and Easy Installation

Developed to ensure fast and hassle free installation with fitting-to-fitting loop-in/loop-out wiring connector.

Benefits of Loop-in/Loop-out

- Tool-less wiring connector
- Simplifies the installation process
- Reduces time required for installation



Crompton Lamps Limited
Unit 2
Marrtree Business Park
Bowling Back Lane
Bradford
BD4 8QE

Tel: 01274 657 088
Fax: 01274 657 087

Email: sales@cromptonlamps.com
www.cromptonlamps.com

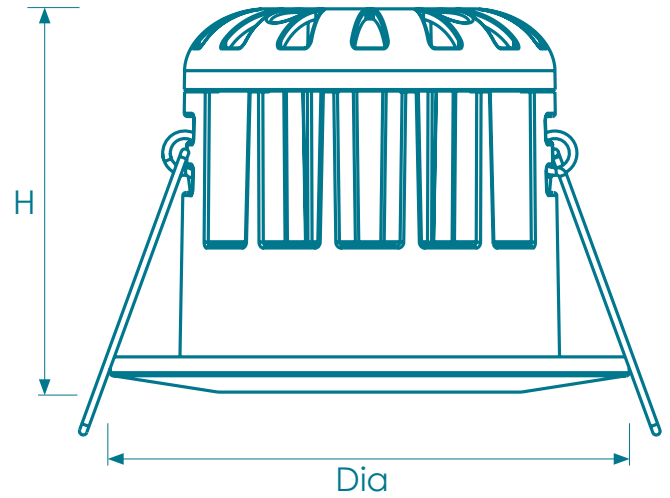
Trade Descriptions: All descriptions represent only particulars of the goods to which they apply and do not form part of any contract. Due to policy of continuous development and improvement, Crompton Lamps Limited reserves the right to change the specification and performance data of the products listed without prior notice or public announcement.

Technical Information



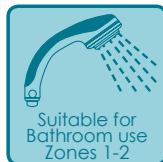
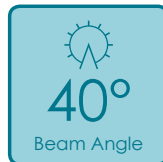
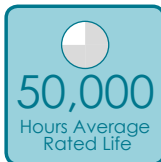
10W All-in-one Fire-Rated Dimmable Downlight

- 50,000 hour life
- 100,000 switching cycles
- 30, 60 and 90 minute fire-rated
- 40° beam angle
- 3000K, 4000K, 6000K tri-colour select
- Colour rendering index ≥80
- Suitable for dimming
- IP65 rated
- Instant full light
- 5 year warranty



Product Code	Watts (W)	Volts (V)	Colour Appearance	Colour Temp (K)	Useful Lumens (lm)	Total Lumens (lm)	Beam Angle	Dimensions (mm)			Order Qty
								Dia	H	Cutout ø	
Single Carton											
11175	10	240	Warm/Cool/Daylight	3000/4000/6000	720	830	40°	82	61	67-75	1

Installation may require advice from a qualified person. Part L Compliant of UK Building Regulations. Part B Compliant BS476 Parts 21 and 22. Suitable for 30 minute 600mm/15mm single layer Standard Wallboard, 60 minute 600mm/12.5mm twin layer Fireboard and 90 minute 450mm/15mm twin layer Fireboard ceilings.



Crompton Lamps Limited
Unit 2
Marrtree Business Park
Bowling Back Lane
Bradford
BD4 8QE

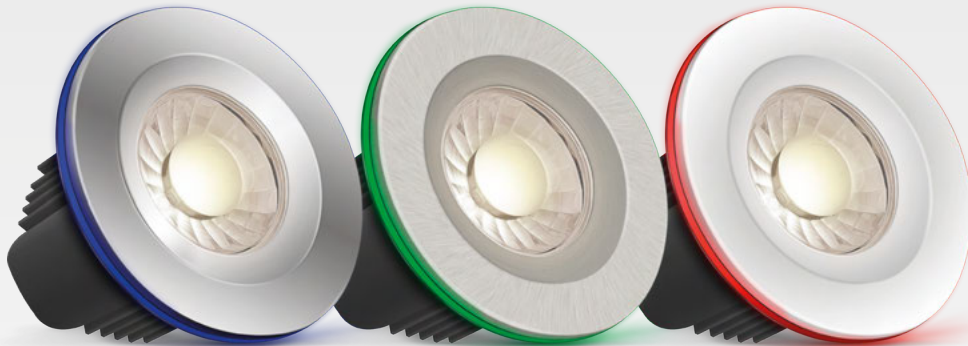
Tel: 01274 657 088
Fax: 01274 657 087

Email: sales@cromptonlamps.com
www.cromptonlamps.com

Trade Descriptions: All descriptions represent only particulars of the goods to which they apply and do not form part of any contract. Due to policy of continuous development and improvement, Crompton Lamps Limited reserves the right to change the specification and performance data of the products listed without prior notice or public announcement.



Other fantastic Phoebe LED products that may interest you...



Spectrum LED Downlight with Bluetooth App Control

Features ambient halo light, interchangeable bezels, IP65 rating and is 30, 60 and 90 minute fire rated. The Spectrum is fully dimmable and the twin light outputs can be used together or independently. Controllable by the Spectrum Control App.

Visit our website and view our full range of lamps and fittings

Benefits of signing up:

- Online ordering
- Special offers
- Check stock and prices
- View order history
- Detailed product information
- View our comprehensive range



Crompton Lamps Limited
 Unit 2
 Marrtree Business Park
 Bowling Back Lane
 Bradford
 BD4 8QE

Tel: 01274 657 088
 Fax: 01274 657 087
 Email: sales@cromptonlamps.com
 www.cromptonlamps.com



Design and production by Marketing,
 Crompton Lamps Limited
 E. & O. E. © Crompton Lamps Limited 2019.
 All rights reserved.

